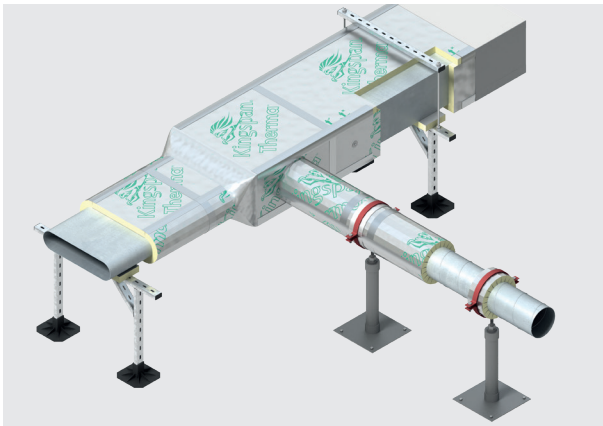


Technical Insulation

Great Britain & Ireland

Therma™ Duct Insulation

Rigid Insulation for Outdoor Rectangular, Circular and Flat Oval HVAC Ductwork



Product Details

Overview

Kingspan Therma™ Duct Insulation is a high performance thermal insulation designed for use on rectangular, circular and flat oval ductwork in HVAC / building services applications. It is specifically intended for outdoor installation, providing effective insulation for external ductwork and associated equipment operating within a temperature range of -20°C to +80°C.

Kingspan Therma™ Duct Insulation is suitable for both new build and refurbishment projects in the residential, commercial, institutional, light industrial and leisure sectors.

Moreover, it is especially suitable for high specification projects where non-fibrous insulants may be preferred, for example: outdoor ductwork in the food, beverage and pharmaceutical industries; and clean air and hygiene controlled environments.

Kingspan Therma™ Duct Insulation is CE marked in conformance with BS EN 14308: 2009 + A1: 2013 (Thermal insulation products for building equipment and industrial installations. Factory made rigid polyurethane foam (PUR) and polyisocyanurate foam (PIR) products. Specification) and a Declaration of Performance (DoP) is available to download from www.kingspanductwork.co.uk/tdi. The performance declared in the DoP corresponds to that of flat boards (not slotted / not curved).

General Properties

Kingspan Therma™ Duct Insulation comprises a high performance fibre-free rigid thermoset polyisocyanurate (PIR) insulation core, faced on both sides with a low emissivity composite foil autohesively bonded to the insulation core during manufacture.

The insulation core is manufactured with a blowing agent that has a negligible Ozone Depletion Potential (ODP) and low Global Warming Potential (GWP) ≤ 5 .

Kingspan Therma™ Duct Insulation has a 90% (or greater) closed cell structure and a compressive strength that typically exceeds 120 kPa at 10% compression.

The rigid nature of Kingspan Therma™ Duct Insulation enables the specified thickness of insulation to be maintained at the corners of rectangular ductwork and at locations where HVAC / building services equipment is specified. Non-rigid glass and rock mineral fibre duct wrap products, on the other hand, risk being overstretched and compressed in these locations, potentially leading to a reduction in thermal performance.

Its rigidity also enables the straightforward application of vapour barrier tape and finishing materials which, in turn, facilitates the creation of a continuous and fully sealed vapour barrier.

This can provide a neater, closer fitting finish than that achievable with non-rigid glass or rock mineral fibre duct wrap products.

Insulation on Curved Surfaces

Slotted duct insulation is recommended for curved surfaces.

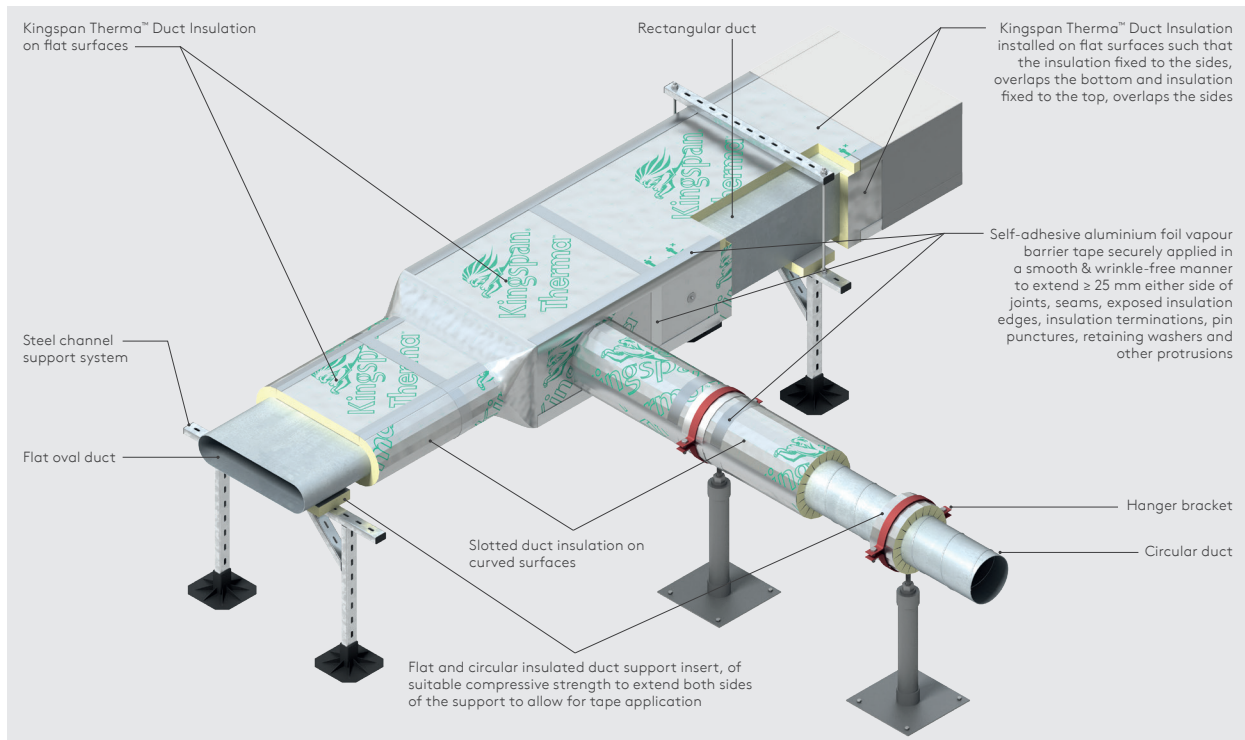


Figure 1: Fixing Details

Product Details

Insulated Duct Support Inserts

During the installation of ductwork, the contractor should place insulated support inserts between ducts and supports, to extend both sides of the support to allow for tape application. Insulated duct support inserts should be of suitable compressive strength to carry the loads transmitted to the supports and should be of the same thickness as that of the adjacent duct insulation.

Insulated duct support inserts enable a more consistent run of ductwork insulation, by allowing specified insulation levels to be maintained at ductwork support and hanger locations.

Interruptions in insulation continuity, by materials with significantly worse thermal conductivities, or no insulation at all, can result in thermal bridging (sometimes referred to as cold bridging). This can reduce the efficacy of the insulation through consequential heat losses / gains. The use of non-insulated duct supports can result in a relevant area of a ductwork system being seriously under-insulated.

Thermal Properties

The thermal conductivities (λ -values) detailed below are quoted in accordance with BS EN 14308: 2009 + A1: 2013 (Thermal insulation products for building equipment and industrial installations - Factory made rigid polyurethane foam (PUR) and polyisocyanurate foam (PIR) products).

Temperature (°C)	Thermal Conductivity (W/mK)
- 20°C	0.022
+ 10°C	0.023
+ 19°C	0.023
+ 25°C	0.024
+ 50°C	0.027
+ 80°C	0.031

Table 1: Thermal Conductivity of Kingspan Therma™ Duct Insulation.

Note: The thermal properties declared correspond to those of flat boards (not slotted / not curved).

Space Saving

Enhanced thermal performance enables the use of thinner insulation, which can contribute towards space savings. Increased space can facilitate installation, cleaning and maintenance operations in confined areas. Furthermore, thinner insulation can result in a reduction in surface area and therefore savings in finishing materials.

Recommended Thickness

For recommended thicknesses, please see Appendix 1.

Sustainability & Responsibility

Kingspan Technical Insulation has a long-term commitment to sustainability and responsibility: as a manufacturer and supplier of insulation products; as an employer; as a substantial landholder; and as a key member of its neighbouring communities.

Further information can be found at www.kingspan.com/gb/en/about-us/sustainable-buildings-hub/.

Management System Certifications

Kingspan Therma™ Duct Insulation is manufactured under a management system certified to BS EN ISO 9001: 2015 (Quality management systems. Requirements), BS EN ISO 14001: 2015 (Environmental Management Systems. Requirements), BS ISO 45001: 2018 (Occupational health and safety management systems) and BS EN ISO 50001: 2018 (Energy Management Systems. Requirements with guidance for use).

Fire Performance

Kingspan Therma™ Duct Insulation has a European fire classification of F to BS EN 13501-1: 2018 (Fire classification of construction products and building elements. Classification using data from reaction to fire tests).

Consideration should be given when installing this product on outdoor ductwork rising up the external wall of a building where additional risk of fire spread may be identified, as the European class of this material is not A1 or A2.

Where additional risk is identified, a suitably qualified professional should assess the suitability of our product on a case-by-case basis.

Further details of the fire performance of Kingspan Technical Insulation products may be obtained from the Kingspan Technical Insulation Technical Service Department.

Sitework

Introduction

In addition to the information given in this section, it is recommended that reference is also made to BS 5970: 2012 (Thermal insulation of pipework, ductwork, associated equipment and other industrial installations in the temperature range of - 100°C to + 870°C - Code of practice).

Installation

- Care should be taken when handling and transporting insulation products to prevent physical damage.
- During the installation of galvanised steel ductwork, the contractor should place insulated support inserts between ducts and supports, to extend both sides of the support to allow for tape application. Insulation at supports should be with a product of suitable compressive strength to carry the loads transmitted to the supports and should be of the same thickness as that of the adjacent duct insulation.
- In addition to the surfaces of ductwork and associated HVAC equipment - flanged joints, stiffeners, fasteners and connections should also be effectively insulated in order to reduce heat loss, heat gain and / or to control condensation.
- To facilitate inspection, testing, adjustment, balancing, maintenance and cleaning, a removable and fully vapour sealed piece of insulation, of sufficient size, should be provided at access door locations, if the door is not already pre-insulated.
- Insulation should not be installed at locations where the ductwork penetrates fire resistance rated walls, partitions, floors and ceiling-floor assemblies. Consideration should be given to current Buildings Regulations / Standards with regard to the requirements for and provision of, fire stops.
- Kingspan Therma™ Duct Insulation should not be installed within 500 mm of a fire damper.
- Before being insulated, surfaces should be made clean, dry and free from grease, dust, dirt, loose rust, scale and all other foreign matter.
- The insulation should be installed to achieve a close fit between the insulation and substrate, as well as between insulation joints.
- The ingress of moisture, or other foreign matter, either into the insulation or between the insulation and substrate, should be prevented during installation.
- When insulating rectangular ductwork, the thickness of insulation that has been specified should be maintained at all four corners of the duct.
- On horizontally orientated ducts, the insulation fixed to the sides overlaps the bottom and insulation fixed to the top overlaps the sides (see Figure 1 on page 2 of this document).
- The insulation should be securely fixed to the substrate by means of adhesive, by mechanical fixings or by a combination of both.
- When adhesive is used, a compatible high-strength contact adhesive should be applied in accordance with the manufacturer's recommendations. For suitable adhesives, please contact the Kingspan Technical Insulation Service Department.
- On rectangular ductwork the selection of compatible mechanical fixings will be dependent upon: the substrate material; operating temperatures, size and orientation of the duct and the duct wall; and the degree of vibration to which the duct is subjected during operation.
- Mechanical fixings, if used, should be corrosion resistant, capable of sustaining the calculated tensile dead load perpendicular to the duct wall and securely fixed so that they do not detach from the duct during its service life.
- Mechanical fixings should be positioned so that they are neatly and evenly distributed under each piece of insulation. They should be located no less than 75 mm and no greater than 150 mm, from insulation edges and corners.
- Mechanical fixed banding and self-adhesive banding tape can be used as additional securement.
- Mechanically fixed bands (preferably aluminium) and matching seals can be used as mechanical means on circular ductwork. The banding should be no less than 15 mm wide and should be applied circumferentially at least three per section of insulation or at maximum 400 mm centres, ensuring that the vapour barrier is not damaged.
- A self-adhesive banding tape can be used on rectangular and circular ductwork. The banding tape, designed to permanently secure the insulation to the duct, should be applied around the duct insulation at maximum 400 mm centres.

Vapour Barrier

- The vapour barrier over the insulation should be continuous and fully sealed.
- A high strength self-adhesive aluminium foil vapour barrier tape should be applied to all discontinuities in the vapour barrier. This includes those between insulated duct support inserts and abutting duct insulation, joints, seams, exposed insulation edges, insulation terminations, pin punctures, retaining washers and other protrusions.
- The self-adhesive vapour barrier tape should be applied in a smooth and wrinkle-free manner. It should extend no less than 25 mm either side of joints, seams, insulation edges and terminations, as well as in all directions of pin punctures, retaining washers and other protrusions.
- To ensure successful adhesion, all surfaces to receive self-adhesive vapour barrier tape should be made clean, dry and free from grease, dust, dirt and all other foreign matter prior to application. If required, surfaces may be primed with a thin coat of compatible high-strength contact adhesive. A gentle pressure may also be exerted using a soft spatula tool, whilst applying the tape.

Sitework

Protection & Finishes

- The insulation must be adequately protected with an additional weatherproof and water / vapour tight finish that shields against the effects of wind and sunlight. The finish should also be capable of providing suitable protection if at risk of being subjected to mechanical or physical abuse, e.g. birds. Suitable finishes include: aluminium or stainless steel sheet; aluminium-zinc alloy coated steel sheet; heavy-duty, self-adhesive laminate; synthetic elastomeric jacketing, systems; reinforcing glass / synthetic cloth embedded, between two coats of appropriate coating; or UV resistant glass reinforced polyester / epoxy (GRP / GRE) cladding systems (all applied in accordance with the manufacturer's recommendations and the project's specification requirements).
- When installing an additional finish over the standard factory-applied low emissivity composite foil facing, care must be taken to preserve the integrity of the vapour barrier at all times.

Identification of Services

- Both insulated and non-insulated services should be clearly identifiable.
- The identification of mechanical services should be in accordance with the project specification and the latest industry guidance.
- The identification system and its method of application should be compatible with the finish. They should also be suitable for the operating and ambient conditions.



General

Cutting

- Manual cutting of the insulation boards should be carried out either by using a fine toothed saw, or by scoring the surface with a sharp knife and cutting through the full thickness of insulation.
- Ensure accurate trimming to achieve close-butting joints and continuity of insulation.
- Automated computer aided cutting may be carried out using CNC blade / router machinery.

Availability

- Kingspan Therma™ Duct Insulation is available through specialist insulation distributors throughout the UK and Ireland.

Packaging & Storage

- The polyethylene packaging of Kingspan Insulation products, which is recyclable, should not be considered adequate for outdoor protection.
- Insulation materials should be adequately protected from the weather, humidity, abrasive matter, contaminants and all other foreign matter.
- Ideally, products should be stored inside a building. If, however, outside storage cannot be avoided, they should be stored in a dry atmosphere, clear of the ground, out of direct sunlight and covered with an opaque and weatherproof material. Products that have been allowed to get wet should not be used.
- Insulation products should be maintained in good condition throughout the duration of the works and should not be unpacked onsite until required for immediate use. They should be returned to storage at the end of each workday.

Health & Safety

- Kingspan Therma™ Duct Insulation is chemically inert and safe to use.
- A Safety Information Data Sheet is available from www.kingspanductwork.co.uk/tdi.

NB The reflective surfaces on this product are designed to enhance its thermal performance. As such, it will reflect light as well as heat, including ultraviolet (UV) light. Therefore, if the product is being installed during very bright or sunny weather, it is advisable to wear UV protective sunglasses or goggles and if the skin is exposed for a significant period of time, to protect the bare skin with a UV block sun cream. The reflective facing used on this product can be slippery underfoot when wet. Therefore, it is recommended that any excess material should be contained to avoid a slip hazard. Warning - do not stand on or otherwise support your weight on the product.

Appendix 1

Recommended Thickness

Kingspan Therma™ Duct Insulation can be used to insulate ductwork and associated equipment outdoors only. The reference to indoor still air temperature presented below is a standardized assumption for calculation purposes.

Indicative thickness of duct insulation to comply with:

- BS 5422: 2023 (Method for specifying thermal insulating materials for pipes, tanks, vessels, ductwork and equipment operating within the temperature range -40°C to +700°C), Tables 12, 13 and 14; and
- England Approved Document L; Wales Approved Document L; Scotland Non-Domestic Technical Handbook; Northern Ireland Technical Booklet F2; Ireland Technical Guidance Document L.

Notes:

All calculations according to BS EN ISO 12241 : 2022. (Thermal insulation for building equipment and industrial installations. Calculation rules).

When a calculated thickness is not commercially available, a thicker product or double layer will be required (as indicated in brackets below).

Minimum Thickness of Kingspan Therma™ Duct Insulation (mm) for Condensation Control on Ductwork Carrying Chilled Air in Ambient Condition			
Indoor Still Air Temperature +25° C, Relative Humidity 80%, Dewpoint Temperature 21.3° C			
Minimum Air Temperature Inside Duct (°C)	Minimum Thickness of Insulating Material (mm)		
	Low Emissivity: 0.05 (e.g. Bright Alum. Foil)	Medium Emissivity: 0.44 (e.g. Dusty Galvanised Steel)	High Emissivity: 0.90 (e.g. Steel, Black Painted)
15	20 (25)	20 (25)	20 (25)
10	30	20 (25)	20 (25)
5	50	25	20 (25)
0	60 (30 + 30)	30	20 (25)

Table 2: Minimum thickness of Kingspan Therma™ Duct Insulation (mm) for condensation control on ductwork carrying chilled air in ambient condition

Assumptions: horizontal duct, with 600 mm vertical sidewall in still air.
Aged thermal conductivity of insulation: 0.023 W/mK at 10°C and at 19°C (λ-value).
Note that the factory applied bright aluminium foil is a low emissivity facing (ε = 0.05).

Minimum Thickness of Kingspan Therma™ Duct Insulation (mm) for Ductwork Carrying Warm Air to Control Heat Loss			
Air Temperature 35°C; Ambient Temperature 15°C			
Low Emissivity: 0.05 (e.g. Bright Alum. Foil)	Medium Emissivity: 0.44 (e.g. Dusty Galv. Steel)	High Emissivity: 0.90 (e.g. Steel, Black Painted)	Max Permissible Heat Loss (W/m²)
20 (25)	25	25	16.34

Table 3: Minimum thickness of Kingspan Therma™ Duct Insulation (mm) for ductwork carrying warm air to control heat loss

Assumptions: horizontal duct, with 600 mm vertical sidewall in still air.
Aged thermal conductivity of insulation: 0.023 W/mK at 25°C (λ-value).
Note that the factory applied bright aluminium foil is a low emissivity facing (ε = 0.05).

Minimum Thickness of Kingspan Therma™ Duct Insulation (mm) for Chilled / Dual Purpose Ductwork to Control Heat Gain			
Air Temperature 13°C; Ambient Temperature 25°C			
Low Emissivity: 0.05 (e.g. Bright Alum. Foil)	Medium Emissivity: 0.44 (e.g. Dusty Galv. Steel)	High Emissivity: 0.90 (e.g. Steel, Black Painted)	Max Permissible Heat Gain (W/m²)
40	40	40	-6.45

Table 4: Minimum Thickness of Kingspan Therma™ Duct Insulation (mm) for chilled / dual purpose ductwork to control heat gain

Assumptions: horizontal duct, with 600 mm vertical sidewall in still air.
Aged thermal conductivity of insulation: 0.023 W/mK at 19°C (λ-value).
Note that the factory applied bright aluminium foil is a low emissivity facing (ε = 0.05).

Contact Details

Great Britain

Kingspan Technical Insulation Ltd
Harvey Road | Burnt Mills Industrial Estate
Basildon | SS13 1QJ

T: +44 (0) 1457 890400
E: info.kti@kingspan.com
www.kingspantechinsulation.co.uk

For individual department contact details please visit
www.kingspantechinsulation.co.uk/contacts

Ireland

Kingspan Insulation Ltd
Castleblayney | County Monaghan

T: +353 (0) 42 975 4219
E: info.kti@kingspan.com
www.kingspantechinsulation.ie



For the most up-to-date version of this technical data sheet please scan or click [here](#).

To check that you have the latest version of this brochure please visit www.kingspanproductwork.co.uk or scan the QR code directly above.

To access pre-existing product information or information relating to previously sold/discontinued products please email info.kti@kingspan.com.

The information contained in this brochure is believed to be correct at the date of publication. Kingspan Technical Insulation Limited ("Kingspan Technical Insulation") reserves the right to alter or amend the product specifications without notice due to continuous improvement commitments. There may also be relevant changes between publications with regard to legislation, or other developments affecting the accuracy of the information contained in this brochure. Product thicknesses shown in this document should not be taken as being available ex-stock and reference should be made to the current Kingspan Technical Insulation price-list or advice sought from Kingspan Technical Insulation's Customer Service Department. The information, technical details and fixing instructions etc. included in this literature are given in good faith and apply to uses described. Kingspan Technical Insulation does not accept responsibility for issues arising from using products in applications different from those described within this brochure or failure to correctly follow the information or instructions as described within this brochure. Recommendations for use should be verified with a suitable expert or professional for suitability and compliance with actual requirements, specifications and any applicable laws and regulations. For other applications or conditions of use, Kingspan Technical Insulation offers a technical advisory service (see above for contact details), the advice of which should be sought for uses of Kingspan Technical Insulation products that are not specifically described herein. Please check that your copy of this literature is current by contacting the Kingspan Technical Insulation Marketing Department.

© Kingspan and the Lion Device are Registered Trademarks of the Kingspan Group plc in the UK, Ireland and other countries. All rights reserved.

™ Therma is a Trademark of the Kingspan Group plc.

Registered in England & Wales, No. 05571822. Registered Office: Harvey Road, Burnt Mills Industrial Estate, Basildon, SS13 1QJ, England. VAT GB872003452.

Registered in Ireland, No. 54621. Registered Office: Bree Industrial Estate, Castleblayney, Co. Monaghan, Ireland. VAT IE45750691.

