

Light + Air
North America



Liteway™ Product Brochure

Formerly Guardian 275® from Major Industries, Inc.

Translucent Fiberglass Reinforced Canopies





Contents

Company Overview 3

About Liteway™ 4-8

Innovative Technology	6
Working with Kingspan Light + Air	7
Retrofit Applications	8

Planet Passionate 9

Kingspan Light + Air reserves the right to modify the design, change or discontinue products without prior written notice. The information contained in this brochure is based on data which are believed to be reliable, but no liability is assumed for any method or manner of use by the purchaser.

About Us

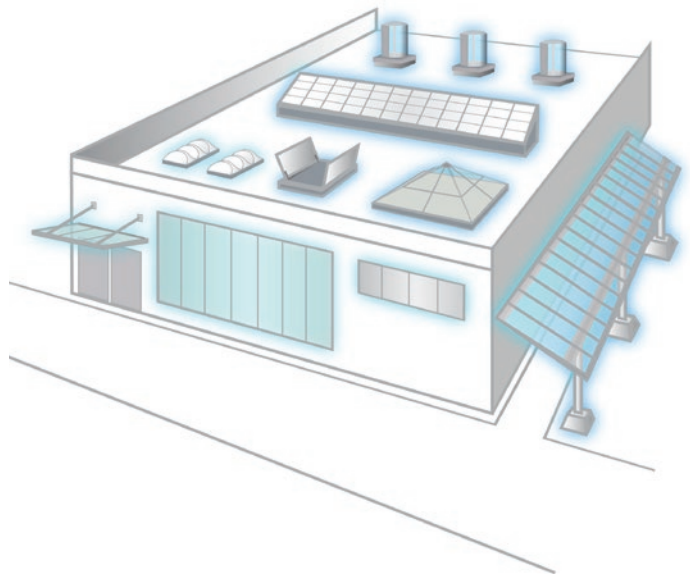
Who We Are

Kingspan Light + Air (KLA) is an award-winning innovator of daylighting solutions for high-performance building envelopes.

We are a pioneer in the daylighting industry, and continually innovate so clients never have to choose between efficiency, style, and safety. And our focus on sustainability is instilled at every level of the company and at every step in the manufacturing process.

Our global team of highly-skilled and experienced professionals and extensive manufacturing capabilities make us a trusted partner in the ever-changing world of modern construction. Together, we leverage our knowledge and expertise to serve as one of the leading daylighting consultants for the architectural community and building industry.

Never Compromise. Always Innovate.



The KLA Advantage

You shouldn't have to compromise your design. We want to enable architects to achieve the highest levels of building performance without sacrificing aesthetics.

This is why we team up with architects, contractors, and building owners to develop highly versatile daylighting systems. We will work with you from design concept through engineering and installation - and beyond - to ensure the highest levels of performance and quality.

Our expansive line-up of daylighting and natural ventilation solutions - from custom skylights and wall systems to tubular daylighting devices to canopies and small unit skylights - means that we can provide you with a system that fits your project's specific needs.



Liteway™

Formerly Guardian 275® from Major Industries, Inc.

From new construction to retrofit applications, Liteway™ fiberglass reinforced polymer (FRP) panel canopies (formerly Guardian 275® from Major Industries, Inc.) are a dependable and cost-effective way to bring glare-free natural light and protection from the elements to your next project. They're engineered and built to be long-lasting, lightweight, and structurally strong.

Liteway™ canopies are a great way to highlight an entryway or define a pick-up and drop-off area while still providing visitors and occupants a bright and welcoming space.



Product Highlights

- Numerous configurations available - including ridges, pyramids, single slopes, polygons, barrel vaults and curved systems - plus completely custom designs
- Lightweight system allows for greater design flexibility
- 2-3/4" panels are available in individual panel sizes up to 5' x 20' (dependent upon code requirements - contact us for details)
- A variety of grid sizes and patterns, as well as sheet color options, are available (see page 6 for illustration)
- Mixed glazed systems available - combining translucent panels with glass glazing
- Long warranties - 25 year fiberbloom and up to 20 year color change



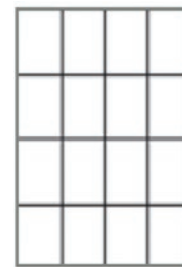
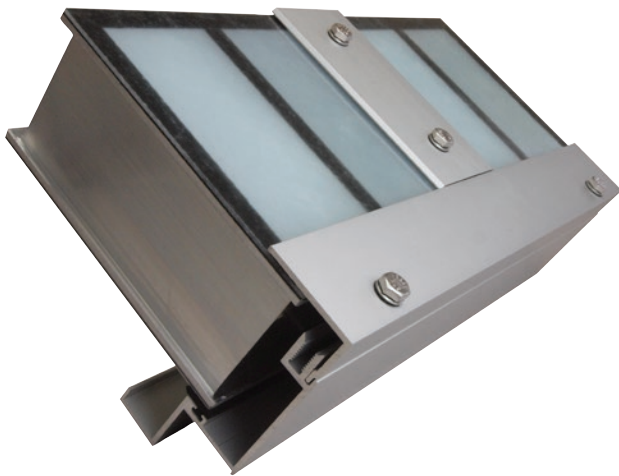


Our Innovative Technology

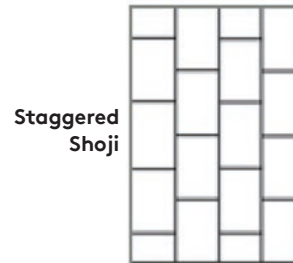
Sandwich Panel System Benefits

Liteway™ systems are made up of two FRP face sheets supported by an internal aluminum grid core. The sheets provide light control and durability, while the interior grid provides support for the panels and adds to the overall system strength. With individual glazing panels up to 5 feet wide and 20 feet long (depending on load requirements), Liteway™ panels can reduce the amount of support needed.

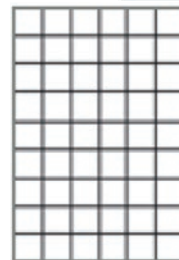
- Ultimate Series™ face sheets for long life and durability
- Large glazing panels are lightweight and easy to install
- Excellent solar heat gain performance
- Multiple color options including Crystal, White, Ice Blue, Aqua, Tan and Desert Rose as well as custom color matching (contact us for availability)
- Long span capabilities - up to 20' (dependent on local code requirements and loading)
- Numerous finish options and colors, including anodized and AAMA 2605 painted aluminum
- Colored insulation option for a stained glass-like look



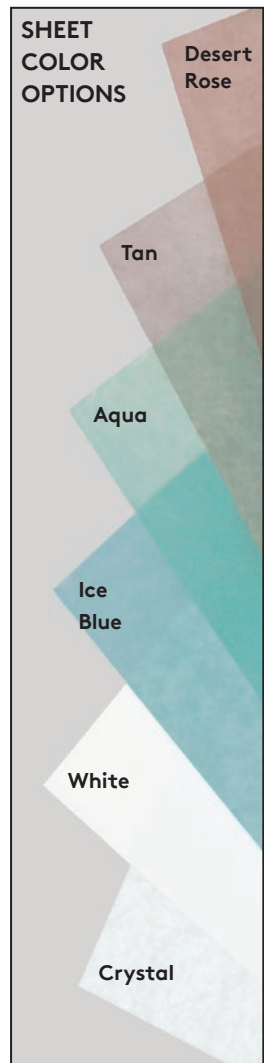
In-Line
Shoji



Staggered
Shoji



Tuckerman



*Colors shown for comparative use only and may differ slightly from actual product. Contact us for sheet color samples.



Benefits of Working with Kingspan Light + Air

Design Assistance

Our team is ready to assist you with your daylighting needs. If you're not sure where to begin, or what the best solution is for your next project, our team of daylighting experts and engineers will work with you to find the right solution. We will walk you through each step of the process, from design to manufacturing to installation and beyond.

Decades of Experience

We're no strangers to translucent canopies... in fact, our roots run deep in the industry. In recent years, Kingspan Light + Air acquired CPI Daylighting and Major Industries, Inc. - manufacturers of translucent canopy systems. Our combined industry expertise and experience allow us to work through your toughest daylighting challenges.

Expert Installation

We work with certified installers who have the product training and know-how to install your system the proper way the first time. We'll work with you throughout the process to ensure that the system you receive is functioning properly.

Renovations & Retrofits

Why Renovate?

- Outdated or degenerating systems are under-performing
- Storm or occupant-related damage
- Deterioration is causing leaks and potential structural failures

Retrofits and renovations can play a key role in revitalizing environments that are suffering from lack of adequate natural lighting. Deteriorating systems can cause reduced light transmission and look less appealing to occupants, not to mention safety issues related to overall performance.

Kingspan Light + Air offers a variety of simple and effective solutions designed to re-glaze or replace existing systems that are under-performing or are in desperate need of repair due to damage or deterioration. Liteway™ canopy systems are lightweight, allowing for flexibility in design, and provide soft, diffuse light that welcomes visitors and occupants.

If you're looking to re-glaze an existing translucent panel canopy system, please contact us. We review each request individually to determine if it's a candidate for retrofit or complete replacement.



Our Commitment to Sustainable Design



ENERGY



CARBON



CIRCULARITY



WATER



What is Planet Passionate?

At Kingspan, we want to play our part. We believe advanced materials, building systems and digital technologies hold the key to addressing these issues.

Working in partnership with the industry, and through our new IKON innovation centre in Ireland and our Planet Passionate global sustainability program, we are confident that together we can:

1. Move to a clean energy future
2. Manage the earth's resources more sustainably
3. Protect our natural environment

Planet Passionate is Kingspan's ambitious sustainability program which aims to impact three global issues:

- Climate change
- Circularity
- Protection of our natural world

By setting ourselves challenging targets in the areas of energy, carbon, circularity and water, we aim to make significant advances in the sustainability of both our business operations and products.

Learn more about Planet Passionate by visiting www.kingspan.com/us/en/about-us/Planet-Passionate/.



Kingspan Light + Air

North American Headquarters

28662 N. Ballard Dr.

Lake Forest, IL 60045

Toll Free: +1 800 759 6985

T: +1 847 816 1060

F: +1 847 816 0425

E: info@kingspanlightandair.us

www.kingspanlightandair.us



To ensure you are viewing the most recent and accurate product information, please scan the QR code above

Care has been taken to ensure that the contents of this publication are accurate, but Kingspan Limited and its subsidiary companies do not accept responsibility for errors or for information that is found to be misleading. Suggestions for, or description of, the end use or application of products or methods of working are for information only and Kingspan Limited and its subsidiaries accept no liability in respect thereof.

For the product offering in other markets please contact your local sales representative or visit kingspan.com

© Kingspan and the Lion Device are Registered Trademarks of the Kingspan Group plc in the US, Canada and other countries.

© Kingspan Light + Air

MKT-BCH-0006-2504

