

Light + Air
North America



Briteway™ Product Brochure

Translucent Canopy + Walkway Solutions





Contents

Company Overview	3
-------------------------	----------

Planet Passionate	3
--------------------------	----------

About Briteway™	4-5
------------------------	------------

System Configurations	6-9
------------------------------	------------

Custom Canopies	6-7
Walkways	8
Single Source Options	9
Pre-engineered	10-11

Kingspan Light + Air reserves the right to modify the design, change or discontinue products without prior written notice. The information contained in this brochure is based on data which are believed to be reliable, but no liability is assumed for any method or manner of use by the purchaser.



About Kingspan Light + Air

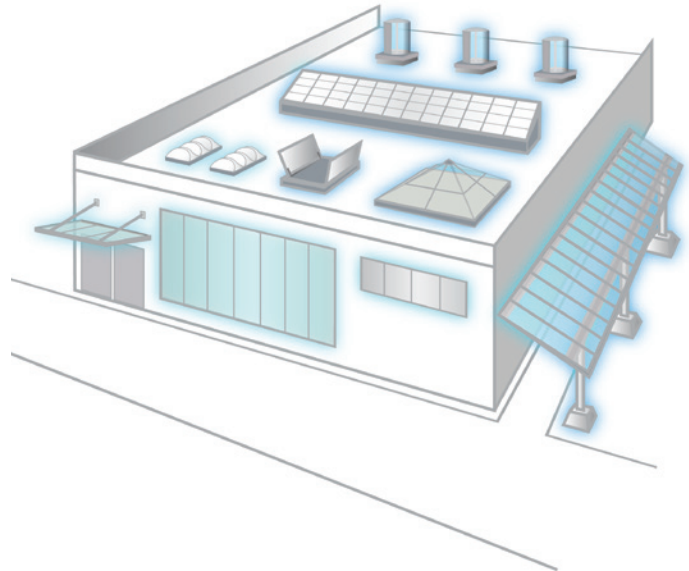
Who We Are

Kingspan Light + Air (KLA) is an award-winning innovator of translucent daylighting solutions for high-performance building envelopes headquartered just north of Chicago.

We are a pioneer and leader of the daylighting industry, and continually innovate so clients never have to choose between efficiency, style, and safety. And our focus on sustainability is instilled at every level of the company and at every step in the manufacturing process.

Our global team of highly-skilled and experienced professionals and extensive manufacturing capability ensure we are the partner of choice for the ever-changing world of modern construction. Together, we leverage our knowledge and expertise to serve as the leading daylighting consultants for the architectural community and building industry.

Never Compromise. Always Innovate.



The KLA Advantage

You shouldn't have to compromise your design. We want to enable architects to achieve the highest levels of building performance without sacrificing aesthetics.

This is why we team up with architects, contractors, and building owners to develop the most versatile daylighting systems on the market. We will work with you from design concept through engineering and installation - and beyond - to ensure the highest levels of performance and quality.

Our expansive line-up of daylighting and natural ventilation solutions - from custom skylights and wall systems to tubular daylighting devices to canopies and small unit skylights - means that we can provide you with a system that fits your project's specific needs.



ENERGY



CARBON



CIRCULARITY



WATER



At Kingspan, we want to play our part. We believe advanced materials, building systems and digital technologies hold the key to addressing these issues. Working in partnership with the industry, and through our new IKON innovation centre in Ireland and our Planet Passionate global sustainability program, we are confident that together we can:

1. Move to a clean energy future
2. Manage the earth's resources more sustainably
3. Protect our natural environment

What is Planet Passionate?

Planet Passionate is Kingspan's ambitious 10-year global sustainability program which aims to impact three global issues:

- Climate change
- Circularity
- Protection of our natural world

By setting ourselves challenging targets in the areas of energy, carbon, circularity and water, we aim to make significant advances in the sustainability of both our business operations and products.

Briteway™ - Envision a Brighter Path

KLA is a single-source provider of translucent canopy and walkway systems, offering flexible design options that include both pre-engineered and customized systems from the ground up.

We believe that good design can have a profoundly positive effect on the built environment and improve the way that we work, learn, play and live. While metal-roof canopies leave passersby feeling confined and adjacent areas cast in shadow, our canopy systems utilize a translucent glazing cover that allows light to pass through, creating a comfortable and well-lit walkway.

Our mission is to set higher standards for the quality and versatility of daylighting technology as we strive to advance daylighting design.

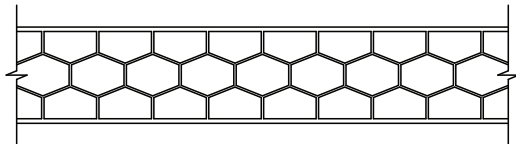


Our Innovative Technology

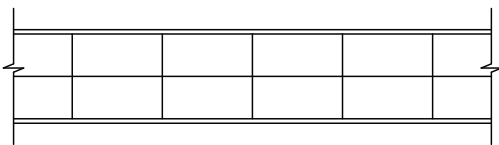
Glazing & Standing Seam Design

Our standing seam systems are designed to provide maximum durability and ensure the highest quality performance. The translucent glazing is precision engineered with Nano-Cell® technology. This specialized panel extrusion results in the cells measuring smaller than 0.18 inches, providing the panel with superior durability and prolonged resistance to impact. The unique cell structure significantly improves the quality and balanced distribution of glare-free natural light. Glazing panels are co-extruded with a specialized UV inhibitor on both sides of the panel.

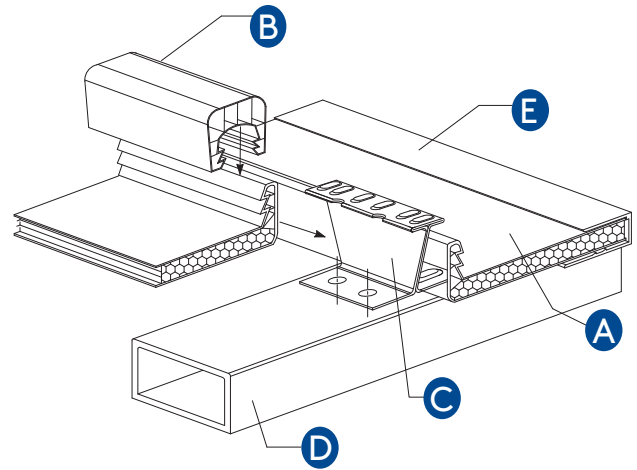
Our panels are extruded with a permanent matte finish on the underside of the panel, which increases light diffusion, virtually eliminates glare, and maximizes visual comfort. All of our Pentaglas panels are certified for Class A (Type I) performance per ASTM E-84. We also offer a system to meet Class A roof construction requirements per ASTM E-108 / UL 790.



Nano-Cell Extrusion, cells measuring 0.18"



Wide-Cell Extrusion



- A Glazing panel
- B Double-tooth panel connector
- C Stainless steel panel clip
- D Aluminum purlin substructure
- E Aluminum framing system

Key Components: Double-Tooth Connection & Stainless Steel Panel Clip

The double-tooth edge on the upstands of the glazing panels enables the system to withstand extremely high loads without concern for the panels disengaging. As the panels deflect, their grip on the u-shaped panel connector actually strengthens, ensuring long-term performance under loading conditions.

Our patented stainless steel panel clip is designed for heavy-duty performance, enabling the system to withstand high loading conditions and also maximizing the span between purlin supports.



Custom Canopies

We can provide everything from a simple glazing system to the design and fabrication of a full structural system, depending on the canopy's configuration and design loads. Your custom canopy might be a simple entrance overhang or perhaps a monumental structure with complex connections. We have experience with every scope of project.

Our Architectural Support team can partner with you and your team to help design the structure and determine the optimal solution for achieving your design goals while maintaining code compliance.



Standard + Custom Glazing Colors

Briteway™ systems are available in a variety of colors, from white to bright blues and reds. Contact us for more information on available colors and custom options.

Framing Finish Options

Beyond glazing color options, Briteway™ systems are available in a variety of finish options, including anodize and paint that meets AAMA 2603/2604 and 2605. Contact us for more information on available colors and custom options.



Custom Canopies

UV Protection & Color Stability

All of our glazing panels are co-extruded with a specialized UV inhibitor on both sides of the panel. This inhibitor provides the glazing with superior color stability. An additional HP coating can be applied for special applications.

Hurricane (HVHZ) Resistance

We offer systems that have been independently tested and certified per HVHZ code requirements and have Florida Product Approval. These systems are extremely durable and are engineered to meet large missile impact resistance, cyclic static air pressure and uniform air pressure requirements per ASTM E-1886 / E-1996 as well as ASTM E-330 / E-331, FBC TAS 201, TAS 202, and TAS 203 for hurricane endurance.

Longevity

Our systems have been designed and manufactured with long-term performance in mind, and all panels come with a standard 10-year warranty.



Custom Walkways

Briteway™ walkways provide protection for your building's occupants while also filling the space with soft natural light. They're a great way to protect walkways that connect parking lots to entryways, connect buildings, and provide shelter for those waiting for transportation. Briteway™ systems are low maintenance and the numerous glazing color options allow for a wide variety of eye-catching design options.



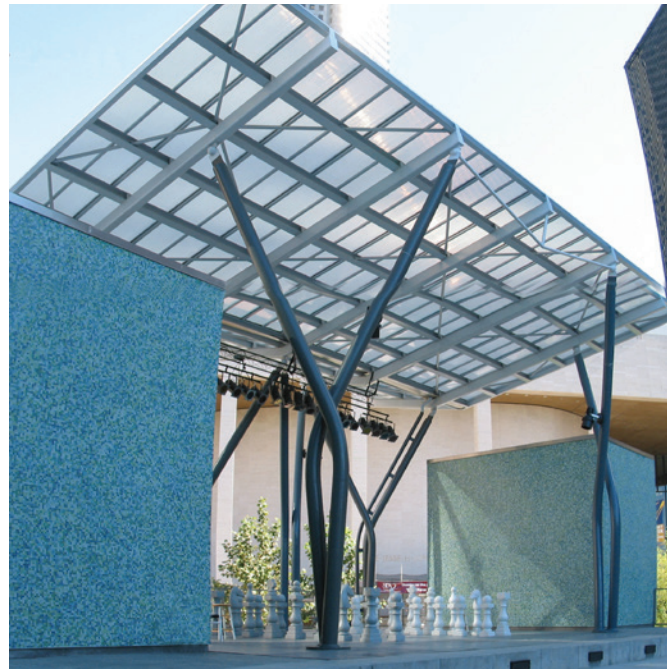
Single-Source Canopy Solutions

KLA offers you peace of mind by delivering single-source solutions that include preliminary design, engineering, manufacturing, fabrication, and delivery of the system. Having one source helps simplify logistics and ensures consistent quality throughout the entire ordering process.

To make certain that the job is done right, we require that all installers attend a mandatory training session to get certified by KLA prior to installing any of our daylighting systems.

Structure

- Our rust-free aluminum structure offers excellent durability and system longevity
- A variety of standard and custom finish options are available, including both paint and anodized finishes
- The aluminum structure is prefabricated using CNC manufacturing technology to provide superior quality control and reduce on-site installation time as well as field labor costs



Pre-Engineered Clearspan Canopies



Our clearspan canopy is a standardized system that has been pre-engineered based on specific design criteria to ensure lasting performance. The innovative clearspan design eliminates the need for cross-bracing, which opens up the space below the canopy structure, creating a more comfortable and pleasant environment for pedestrians. These canopies not only provide shelter, but also allow diffused natural light to pass through, resulting in a more vibrant walkway.

Benefits include...

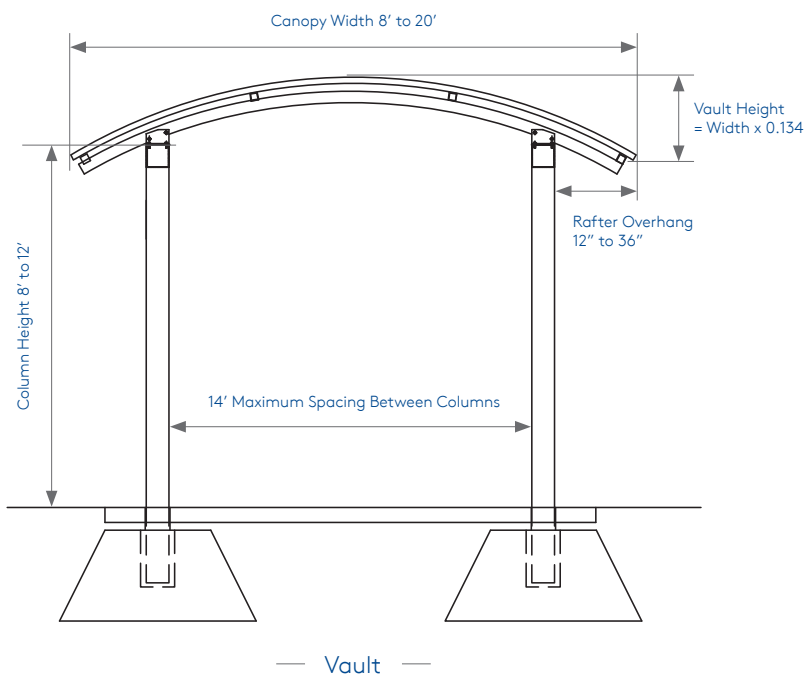
- Design flexibility - a wide range of standard and custom finish colors, a broad selection of glazing colors, and a maximum canopy width of up to 20 ft.
- The rust-free aluminum structure offers excellent durability and system longevity
- KLA is able to provide a single-source solution, supplying everything from the ground up
- Components are shipped fully fabricated and ready to be assembled to ensure superior quality control and simplify the installation process
- No on-site cutting, welding, or painting is necessary, which reduces labor time and installation costs
- Optional gutters and downspouts can be provided by KLA
- Optional Kynar® finish is available with up to a 20-year warranty
- An economical solution that fits your budget



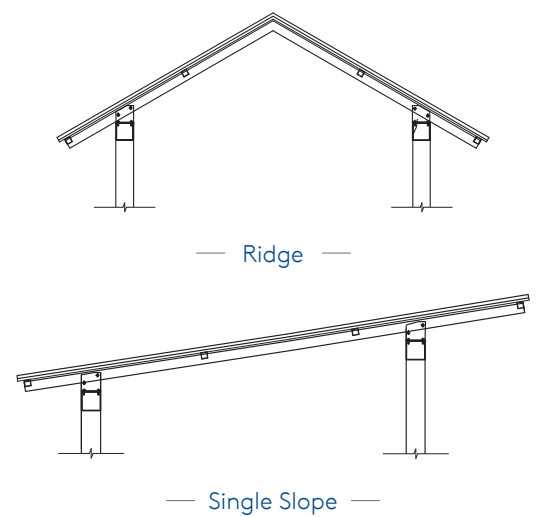
Pre-Engineered Clearspan Canopies



Clearspan Canopy Design Standards



Additional Configurations



Kingspan Light + Air

North American Headquarters

28662 N. Ballard Dr.

Lake Forest, IL 60045

Toll Free: +1 800 759 6985

T: +1 847 816 1060

F: +1 847 816 0425

E: info@kingspanlightandair.us

www.kingspanlightandair.us

For the product offering in other markets please
contact your local sales representative or visit
www.kingspan.com/us/en

For additional technical information and/or daylighting systems design
consultation, contact Kingspan Light + Air for your specific needs. Care has
been taken to ensure that the contents of this publication are accurate, but
Kingspan Limited and its subsidiary companies do not accept responsibility
for errors or for information that is found to be misleading. Suggestions for, or
description of, the end use or application of products or methods of working
are for information only and Kingspan Limited and its subsidiaries accept no
liability in respect thereof.

MKT-BCH-0007-2301

