

Insulated Panels
UK & Ireland



QuadCore® KS1000SRW Roof Panel Product Data Sheet

POWERED BY
QuadCore®
TECHNOLOGY



Product Data

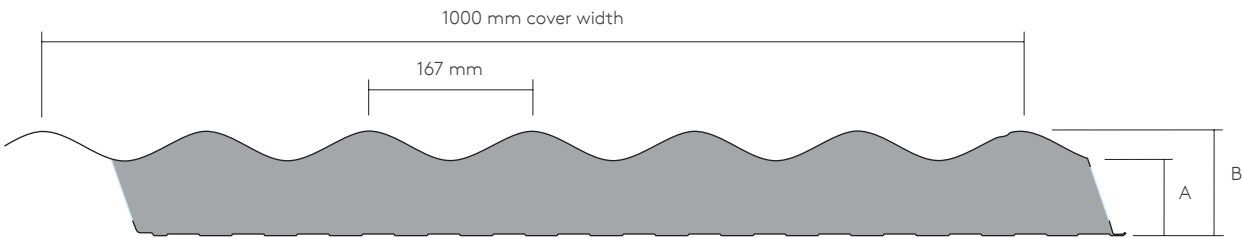
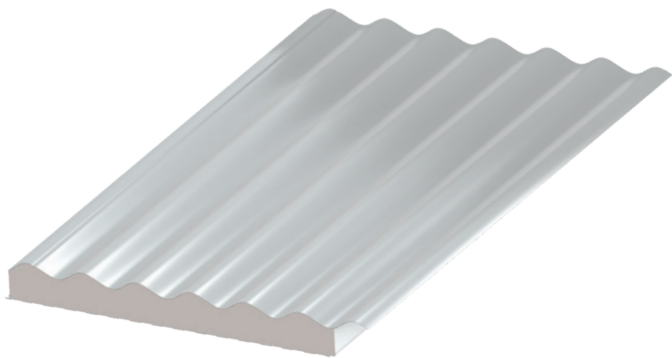
Applications

QuadCore® KS1000SRW Roof Panels are through-fix, sinusoidal profiled, insulated roof panels which can be used for building applications with roof pitches of 4° or more after deflection.

Available Lengths

Standard Lengths (m)	1.8 - 14.5
Longer Lengths (non-standard) (m)	14.5 - 18.3
Shorter Lengths (non-standard) (m)	Below 1.8

Note: Additional costs and transport restrictions may apply for non-standard lengths. All lengths may change for export (outside of the UK and Ireland).



Dimensions, Weight & Thermal Performance

A - Core Thickness (mm)	40	60	80
B - Overall Thickness (mm)	70	90	110
U-Value (W/m²K)	0.38	0.27	0.21
Weight (kg/m²)	9.5	10.3	11.1

The QuadCore® insulation used in QuadCore® KS1000SRW Roof Panels has a Thermal Conductivity (λ) of 0.019 W/m.K

QuadCore® KS1000SRW Roof Panels have a Thermal Transmittance (U-Value), calculated using the method required by the Building Regulations Part L2 (England & Wales), Building Standards Section 6 (Scotland), Part L (Republic of Ireland) and Part F2 (Northern Ireland).

Insulation Core

QuadCore® KS1000SRW Roof Panels are manufactured with an HCFC, CFC and HFC free QuadCore® insulation core.



Product Data

Certification and Testing

Reaction to Fire

QuadCore® KS1000SRW Roof Panels are classified B-s1,d0, when tested on the internal face of the product, according to the European Reaction to Fire classification system (Euroclasses) BS EN 13501-1: 2018 under the certified name KS1000SRW when using the following internal liners:

- CLEANsafe 15, CLEANsafe 120 and AQUAsafe 55.

Please contact Kingspan Tech-eXchange for information relating to the external face.

Roof Applications

QuadCore® KS1000SRW Roof Panels are tested to:

- BROOF(t4) to BS EN 13501-5: 2016 under the certified name KS1000SRW for panel thicknesses 40 - 80 mm and roof pitch of 0° - 10°.
- BROOF(t4) to BS EN 13501-5: 2016 under the certified name KS1000SRW for panel thicknesses 40 - 80 mm and roof pitch of >10°.

Environmental

Kingspan Insulated Panels produced in the UK and Ireland are certified to BES 6001 (Framework Standard for the Responsible Sourcing of Construction Products) 'Good'.

In addition, facilities located in Kingscourt, Holywell and Sherburn generate renewable energy onsite which contributes to that sites energy mix.

Recycled content calculations are available for all QuadCore® products via technical services. Kingspan insulated panels can directly contribute to BREEAM® / LEED® credits.

Air Leakage

An air leakage rate of 3 m³/hr/m² at 50Pa or less can be achieved when using Kingspan insulated roof and wall panels.

For information on detailing required to achieve lower air leakage rates please contact Kingspan Tech-eXchange.

Acoustic

Sound Reduction Index (SRI)

Frequency (Hz)	63	125	250	500	1000	2000	4000	8000
SRI (dB)	20	18	20	24	20	29	39	47

QuadCore® KS1000SRW Roof Panels have a single figure weighted sound reduction $R_w = 25\text{dB}$. Results are based on panels of similar profile and core material.

Materials

Substrate

Metallic protected steel to BS EN 10346: 2015.

Please contact Kingspan Tech-eXchange for information on other substrates.

Coatings – External Weather Sheet

- Kingspan XL Forté: Consists of a multi-layer organic coating, embossed with a traditional leather-grain finish.
- Kingspan Spectrum: Consists of a coated semi-gloss finish with slight granular effect.

For Reaction to Fire performance of external weather sheets please contact Kingspan Tech-eXchange.

Coatings – Internal Liner Sheet

- Kingspan CLEANsafe 15: The coating has been developed for use as the internal lining of insulated panels. Standard colour is "bright white" with an easily cleaned surface.
- Kingspan CLEANsafe 120: The coating has been developed for use as the internal lining of insulated panels where a high level of cleanliness and hygiene is required, and the panels are to be cleaned down on a regular basis.
- Kingspan AQUAsafe 55: The coating has been developed for use as the internal lining of insulated panels to swimming pool internal environments.

For reaction to fire performance of panels with above internal liners please see Certification and Testing section.

Panel End Cut Back

Standard Cut Back Eaves	75 mm
Standard Cut Back End Lap	150 mm

For further information in relation to end laps please contact Kingspan Tech-eXchange.

Product Tolerances

Cut to Length	± 5 mm
Cover Width	± 2 mm
Thickness (Core ≤ 100 mm)	± 2 mm
Thickness (Core > 100 mm)	± 2%
End Squareness	± 3 mm

Product Data

Handing

QuadCore® KS1000SRW Roof Panels can be manufactured in both left to right handed (LH) and right to left handed (RH).

Quality & Durability

QuadCore® KS1000SRW Roof Panels are manufactured from the highest quality materials, using state of the art production equipment to rigorous quality control standards, complying with BS EN ISO 9001 standard, ensuring long term reliability and service life. The panels are also being manufactured under Environmental Management System Certification BS EN ISO 14001, Energy Management System Certification BS EN ISO 50001 and Occupational Health and Safety Certification BS EN ISO 45001 and Compliance Management Systems BS EN ISO 37301.

QuadCore® KS1000SRW Roof Panels are CE marked to BS EN 14509: 2013.



Warranty

QuadCore® Assured Panel Warranty

- 25 years thermal performance
- 25 years fire performance
- 25 years structural performance
- 25 years environmental performance
- Up to 40 years coating performance

Packing

QuadCore® KS1000SRW Roof Panels are stacked weather sheet to weather sheet (to minimise pack height). The top and sides are protected by either cardboard or polystyrene and spiral wrap stretch polyfilm. The number of panels in a pack will vary depending on thickness.

Core Thickness (mm)	40	60	80
No. of Panels per Pack	19	15	11

Note: Applies to UK pack sizes. Please contact Kingspan Tech-eXchange for export information.

Sea Freight

Fully timber crated packs are available on projects requiring delivery by sea freight shipping, at additional costs. Alternatively, steel containers can be used. Special loading charges apply.

Delivery

All deliveries (unless indicated otherwise) are by road transport to project site. Off-loading is the responsibility of the client.

Site Installation Procedure

Site assembly instructions are available from Kingspan Tech-eXchange.

Contact Details

UK

Kingspan Limited

Greenfield Business Park No. 2
Greenfield | Holywell | Flintshire
North Wales | CH8 7GJ

T: +44 (0) 1352 716100

E: info@kingspanpanels.com

www.kingspanpanels.co.uk



Ireland

Kingspan Limited

Carrickmacross Road | Kingscourt
Co. Cavan | A82 E897

T: +353 (0) 42 96 98500

E: info.ire@kingspanpanels.com

www.kingspanpanels.ie



Please scan for the most up to date version of this document.

For the product offering in other markets please contact your local sales representative or visit www.kingspanpanels.com

Care has been taken to ensure that the contents of this publication are accurate, but Kingspan Limited and its subsidiary companies do not accept responsibility for errors or for information that is found to be misleading. Suggestions for, or description of, the end use or application of products or methods of working are for information only and Kingspan Limited and its subsidiaries accept no liability in respect thereof.

